



*Style
Wear
Be* **HIM**
BY HAIRUWEAR™

Model is wearing Sophistication shown in M51S. See page 6.



HIM
BY HAIRUWEAR™

HIMBYHAIRUWEAR.COM
888-655-8900

HAIRUWEAR®
CHANGES EVERYTHING
©2017 HairUWear Inc.



HIM
BY HAIRUWEAR™

*Style HIM.
Wear HIM.
Be HIM.*

MEN'S WIG COLLECTION 2017-18

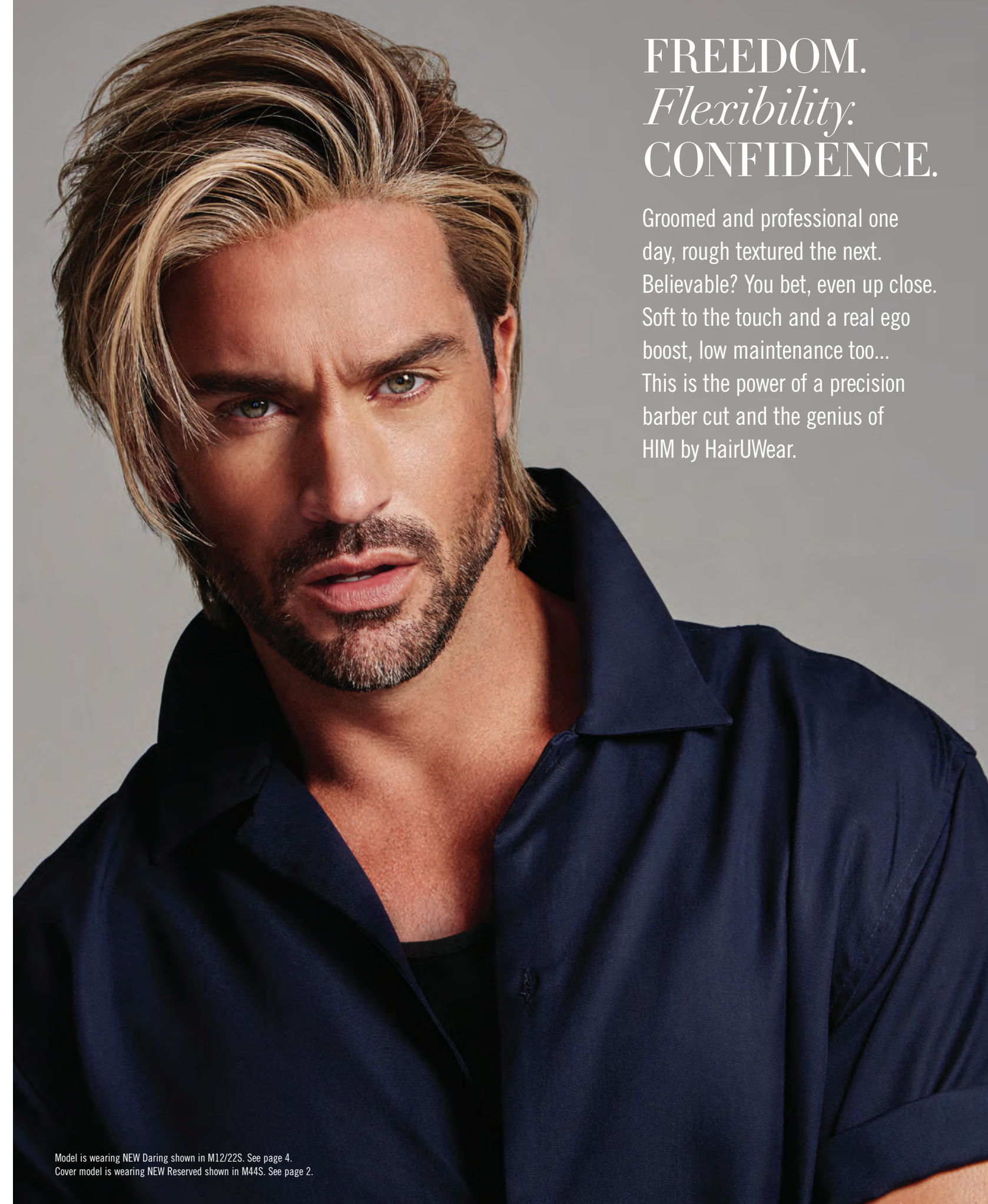


Table of Contents

NEW! RESERVED	02
NEW! DARING	04
SOPHISTICATION	06
CHISELED	08
GRIT	10
EDGE	12
CLASSIC	14
STYLE	16
CARE INSTRUCTIONS + STYLING TIPS	20
CONFIDENT FIT CAP™	21
ACCESSORIES + TOOLS	22-23
CAP CONSTRUCTIONS + SPECS	24-26
COLOR CHART	26

FREEDOM.
Flexibility.
CONFIDENCE.

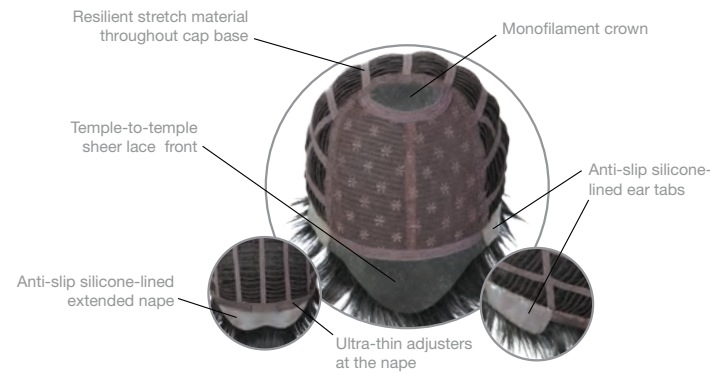
Groomed and professional one day, rough textured the next. Believable? You bet, even up close. Soft to the touch and a real ego boost, low maintenance too... This is the power of a precision barber cut and the genius of HIM by HairUWear.





SPECIAL FEATURES

- Monofilament crown for a natural contour
- Temple-to-temple sheer lace front for natural looking off-the-face styling
- Anti-slip silicone-lined extended nape to keep wig securely in place
- Anti-slip silicone-lined ear tabs to keep wig securely in place
- Resilient stretch material throughout cap base for a custom-like fit
- Ultra-thin adjusters at the nape for a personalized fit



HAIR LENGTHS: Front: 2 ½" | Crown: 3 ¼" | Sides: 2 ¼" | Back: 2 ¾" | Nape: 2 ¼" | Weight: 2 ¼ oz | Cap Size: Average Large
 AVAILABLE COLORS: NEW M1S, M3S, M5S, M7S, M17S, M14S, M34S, M280S, M36S, M38S, M44S, M51S, M56S (shown in M44S)



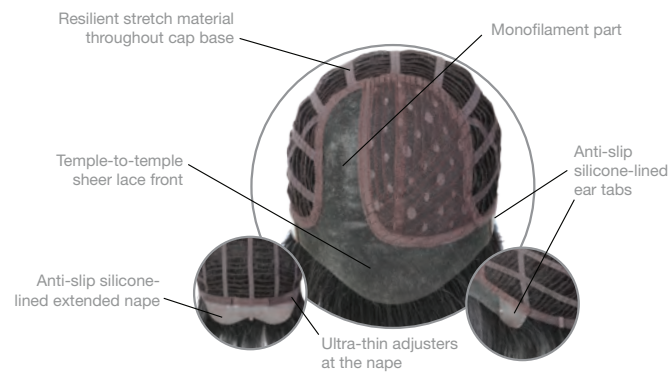
NEW RESERVE D

Shape it up and get tapered with this go to style. The lace front was made specifically for HIM to create the ultimate hairline. This classic cut can be worn neat or messy. Become your own stylist by changing up the bang or adding some styling products. HIM by HairUWear was created for the stylish man who gets what he wants.



SPECIAL FEATURES

- Monofilament part with individually knotted fibers in a wide strip for parting options
- Temple-to-temple sheer lace front for natural looking off-the-face styling
- Anti-slip silicone-lined ear tabs to keep wig securely in place
- Anti-slip silicone-lined extended nape to keep wig securely in place
- Resilient stretch material throughout cap base for a custom-like fit
- Ultra-thin adjusters at the nape for a personalized fit



HAIR LENGTHS: Front: 6 1/2" | Crown: 6 1/2" | Sides: 5 1/4" | Back: 5 1/4" | Nape: 4" | Weight: 2 3/4 oz | Cap Size: Average Large
 AVAILABLE COLORS: NEW M1S, M3S, M5S, M7S, M17S, M14S, M34S, M280S, M36S, M38S, M44S, M51S, M56S, Rooted Shade M12/22S, (shown in M12/22S)

Dare to try length that speaks volumes. The lace front was made specifically for HIM to create the ultimate hairline. More length equals more options. Wear the hair slicked back or down and messy around the face. With this precise cut, no look is off limits. HIM by HairUWear was created for the stylish man who gets what he wants.

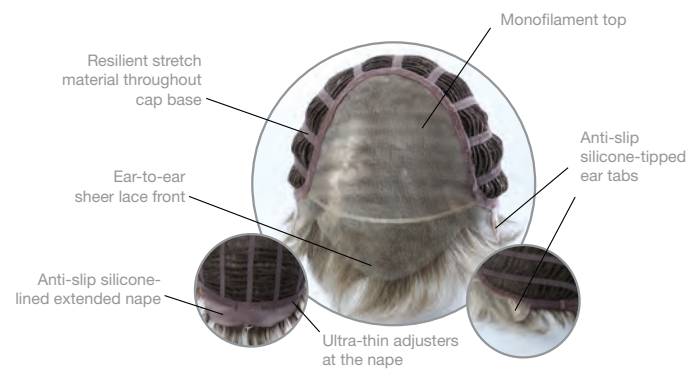


NEW DARING

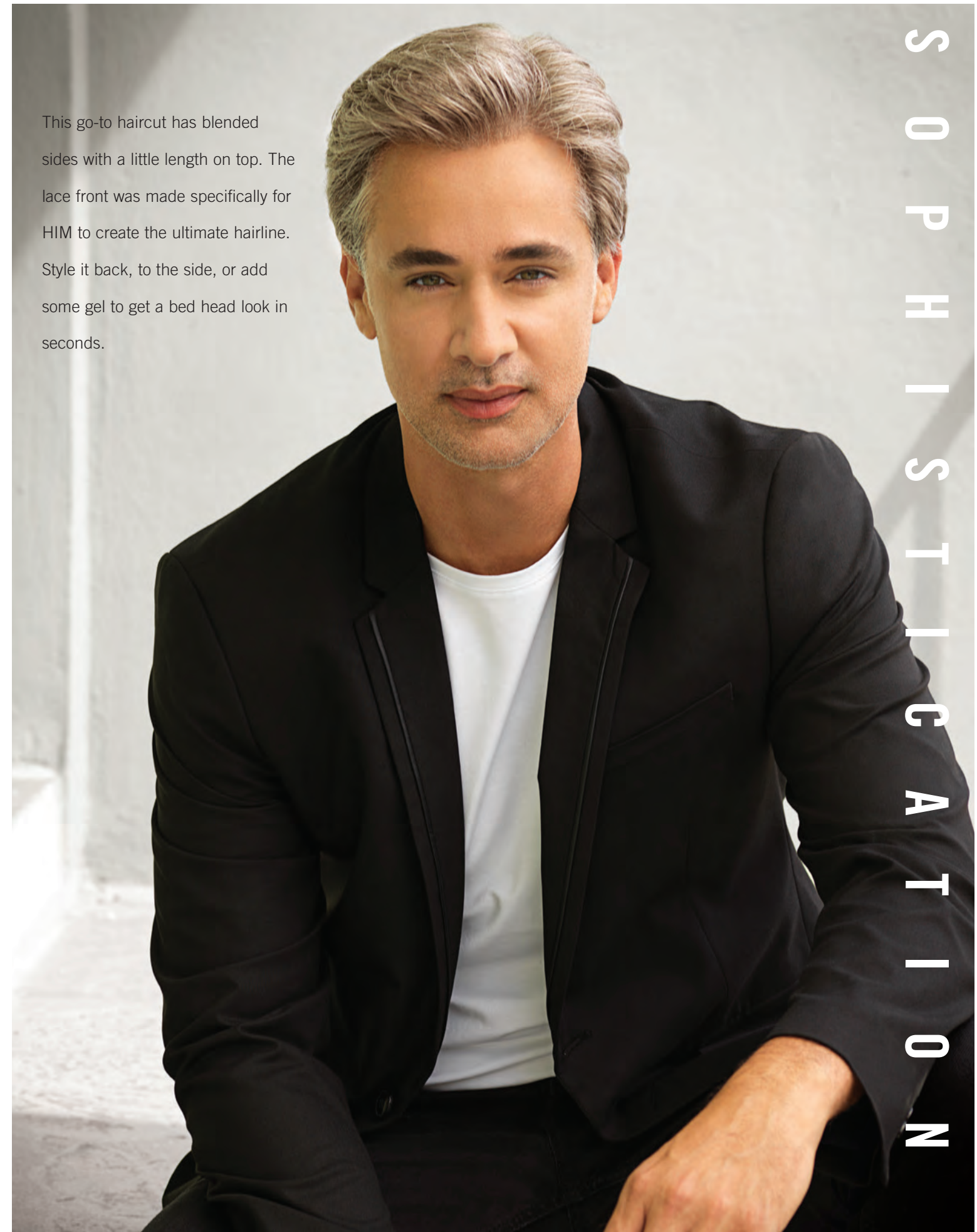


SPECIAL FEATURES

- Monofilament top with individually hand-knotted fibers for a low density, natural movement and parting flexibility
- Ear-to-ear sheer lace front for natural looking off-the-face styling
- Anti-slip silicone-lined extended nape to keep wig securely in place
- Anti-slip silicone-tipped ear tabs to keep wig securely in place
- Resilient stretch material throughout cap base for a custom-like fit
- Ultra-thin adjusters at the nape for a personalized fit



HAIR LENGTHS: Front: 2 ¼" | Crown: 2 ¾" | Sides: 1 ¾" | Back: 2 ¼" | Nape: 2 ¼" | Weight: 2 oz | Cap Size: Average Large
 AVAILABLE COLORS: Coming in 2018 M1S, M3S, M5S, M7S, M17S, M14S, M34S, M280S, M36S, M38S, M44S, M51S, M56S (shown in M51S)



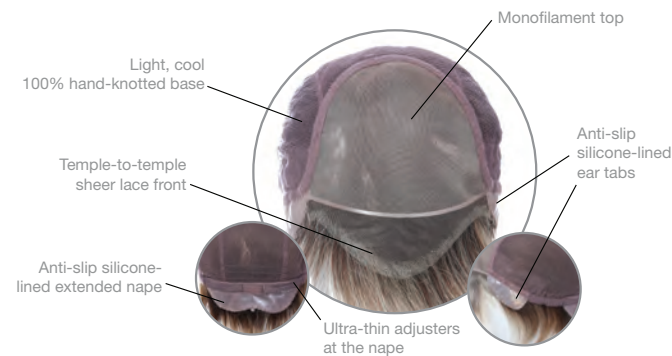
This go-to haircut has blended sides with a little length on top. The lace front was made specifically for HIM to create the ultimate hairline. Style it back, to the side, or add some gel to get a bed head look in seconds.

S O P H I S T I C A T I O N

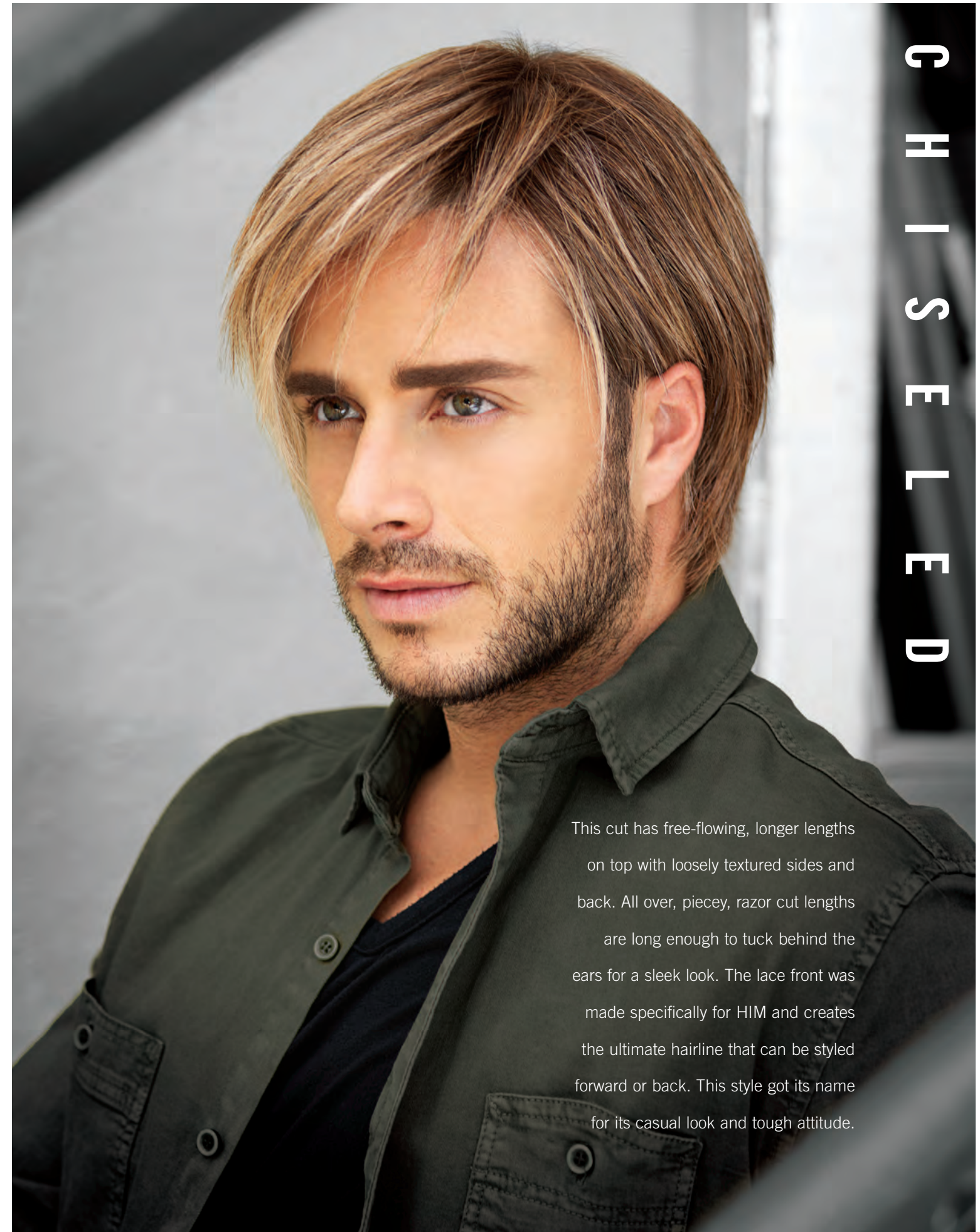


SPECIAL FEATURES

- Light, cool 100% hand-knotted base
- Monofilament top with individually hand-knotted fibers for a low density, natural movement and parting flexibility
- Temple-to-temple sheer lace front
- Anti-slip silicone-lined ear tabs to keep wig securely in place
- Anti-slip silicone-lined extended nape to keep wig securely in place
- Ultra-thin adjusters at the nape for a personalized fit

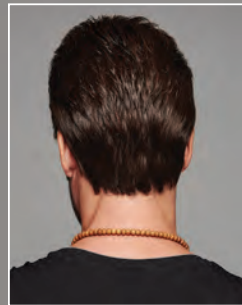


HAIR LENGTHS: Front: 5 ¼" | Crown: 5 ¼" | Sides: 3" | Back: 5" | Nape: 3" | Weight: 2 ¼ oz | Cap Size: Average Large
 AVAILABLE COLORS: Coming in 2018 M1S, M3S, M5S, M7S, M17S, M14S, M34S, M280S, M36S, M38S, M44S, M51S, M56S, Rooted shade M12/22S (shown in M12/22S)



G H I S S E L L E D

This cut has free-flowing, longer lengths on top with loosely textured sides and back. All over, piecey, razor cut lengths are long enough to tuck behind the ears for a sleek look. The lace front was made specifically for HIM and creates the ultimate hairline that can be styled forward or back. This style got its name for its casual look and tough attitude.

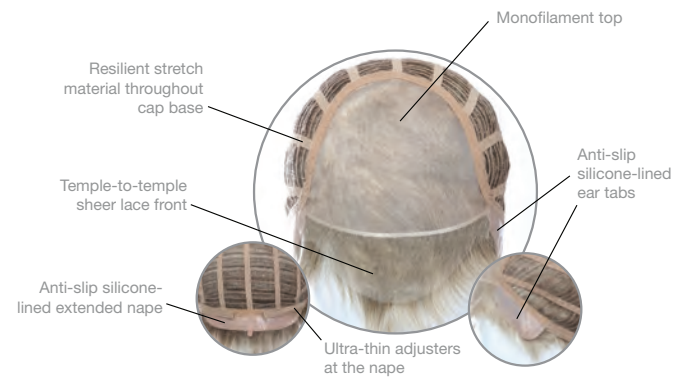


Precisely cut layers take on the best shape in this shorter haircut. The lace front was made specifically for HIM to create the ultimate hairline. Sculpt the shorter layers to fit his mood and attitude.

G R I T

SPECIAL FEATURES

- Monofilament top with individually hand-knotted fibers for a low density, natural movement and parting flexibility
- Temple-to-temple sheer lace front for natural looking off-the-face styling
- Anti-slip silicone-lined extended nape to keep wig securely in place
- Anti-slip silicone-lined ear tabs to keep wig securely in place
- Resilient stretch material throughout cap base for a custom-like fit
- Ultra-thin adjusters at the nape for a personalized fit



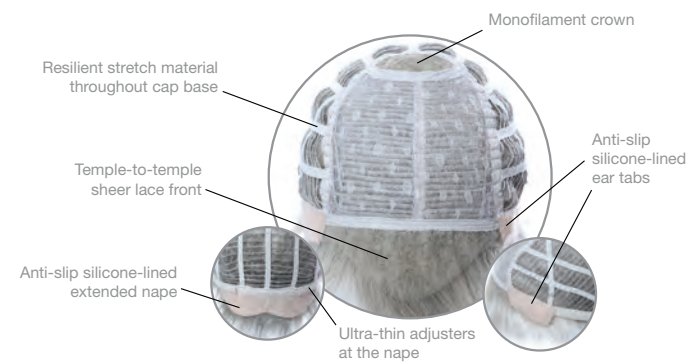
HAIR LENGTHS: Front: 1 3/4" | Crown: 3 1/4" | Sides: 1 3/4" | Back: 2 1/2" | Nape: 2 1/4" | Weight: 2oz | Cap Size: Average Large
 AVAILABLE COLORS: Coming in 2018 M1S, M3S, M5S, M7S, M17S, M14S, M34S, M280S, M36S, M38S, M44S, M51S, M56S (shown in M7S)



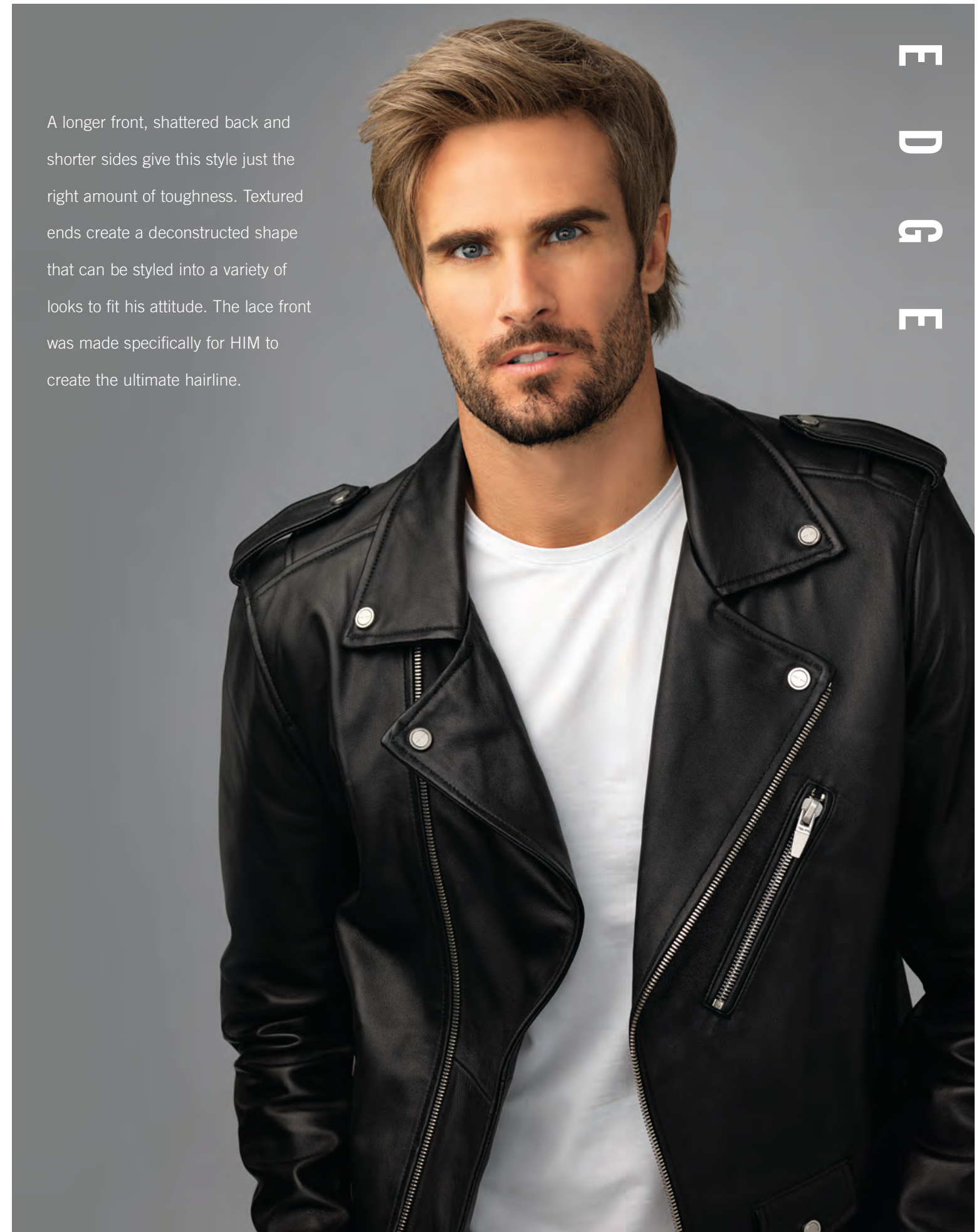


SPECIAL FEATURES

- Monofilament crown for a natural contour
- Temple-to-temple sheer lace front for natural looking off-the-face styling
- Anti-slip silicone-lined extended nape to keep wig securely in place
- Anti-slip silicone-lined ear tabs to keep wig securely in place
- Resilient stretch material throughout cap base for a custom-like fit
- Ultra-thin adjusters at the nape for a personalized fit

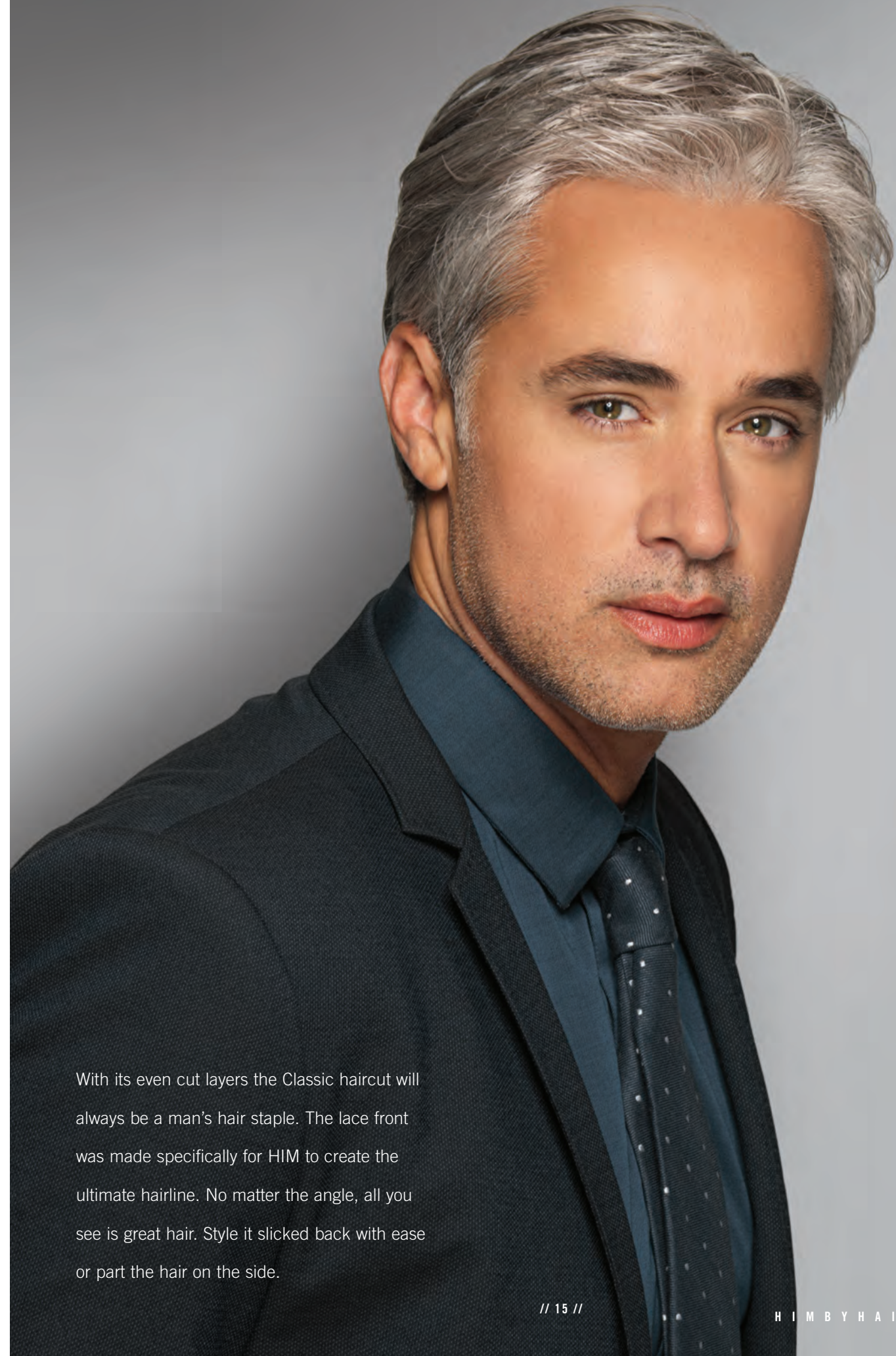


HAIR LENGTHS: Front: 3 ½" | Crown: 4" | Sides: 1 ¾" | Back: 3" | Nape: 2 ½" | Weight: 2 ¼ oz | Cap Size: Average Large
 AVAILABLE COLORS: Coming in 2018 M1S, M3S, M5S, M7S, M17S, M14S, M34S, M280S, M36S, M38S, M44S, M51S, M56S, Rooted shade M12/22S (shown in M17S)



A longer front, shattered back and shorter sides give this style just the right amount of toughness. Textured ends create a deconstructed shape that can be styled into a variety of looks to fit his attitude. The lace front was made specifically for HIM to create the ultimate hairline.

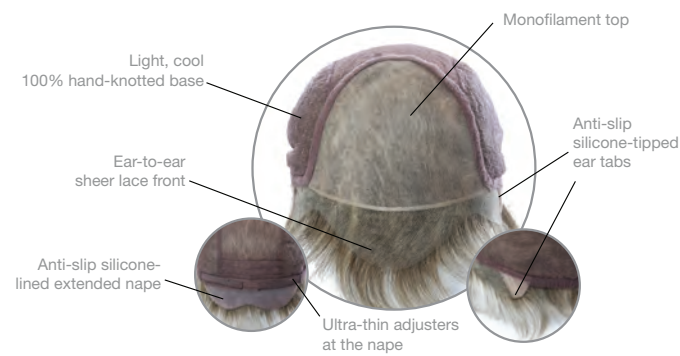
E
D
G
E



C L A S S I C

S P E C I A L F E A T U R E S

- Light, cool 100% hand-knotted base
- Monofilament top with individually hand-knotted fibers for a low density, natural movement and parting flexibility
- Ear-to-ear sheer lace front for natural looking off-the-face styling
- Anti-slip silicone-lined extended nape to keep wig securely in place
- Anti-slip silicone-tipped ear tabs to keep wig securely in place
- Ultra-thin adjusters at the nape for a personalized fit styling



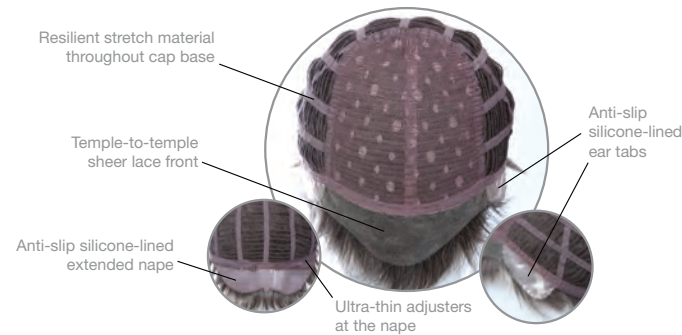
HAIR LENGTHS: Front: 3 ½" | Crown: 3 ¾" | Sides: 2 ¾" | Back: 3 ¼" | Nape: 2" | Weight: 1 ½ oz | Cap Size: Average Large
 AVAILABLE COLORS: Coming in 2018 M1S, M3S, M5S, M7S, M17S, M14S, M34S, M280S, M36S, M38S, M44S, M51S, M56S (shown in M56S)

With its even cut layers the Classic haircut will always be a man's hair staple. The lace front was made specifically for HIM to create the ultimate hairline. No matter the angle, all you see is great hair. Style it slicked back with ease or part the hair on the side.

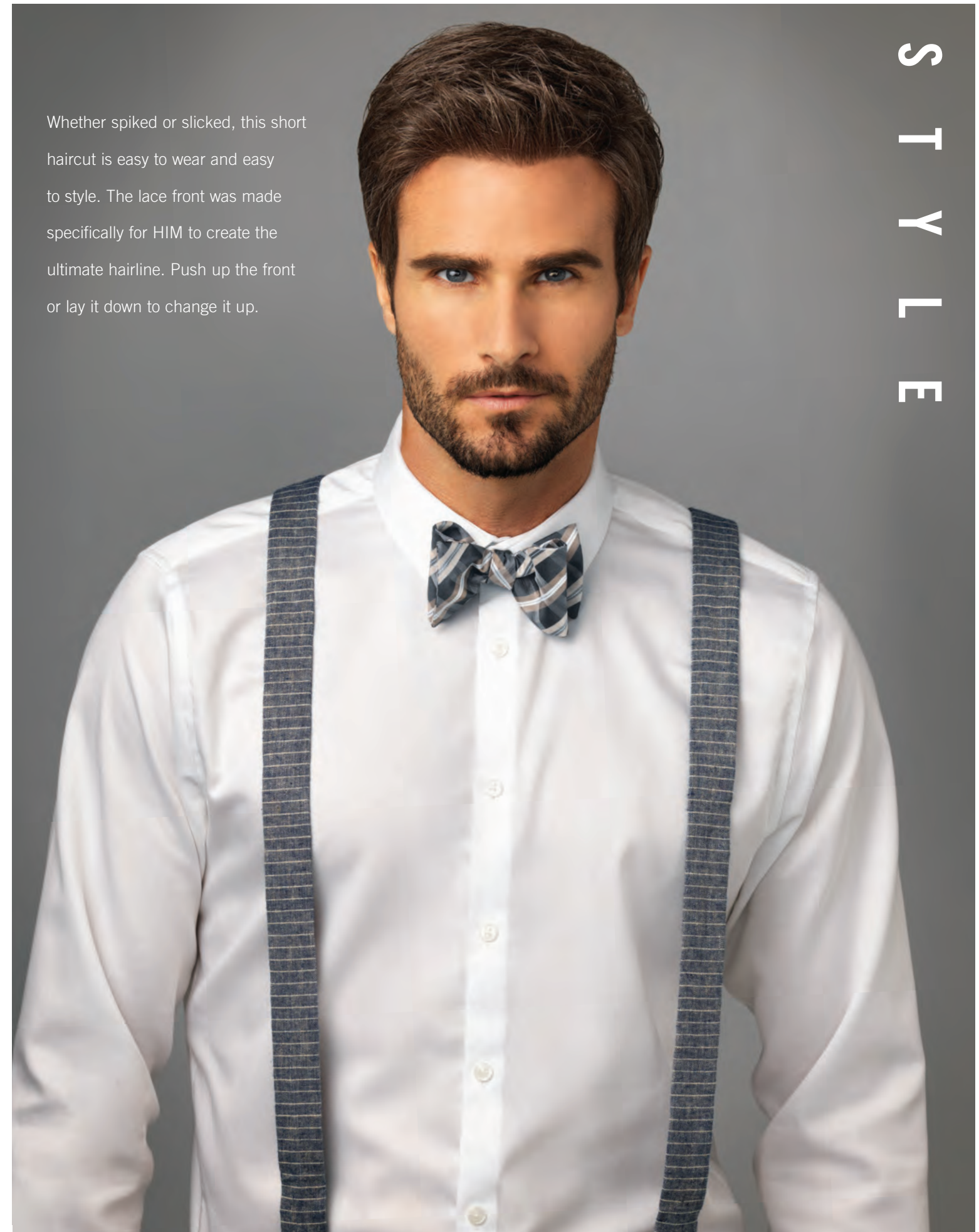


SPECIAL FEATURES

- Temple-to-temple sheer lace front for natural looking off-the-face styling
- Anti-slip silicone-lined extended nape to keep wig securely in place
- Anti-slip silicone-lined ear tabs to keep wig securely in place
- Resilient stretch material throughout cap base for a custom-like fit
- Ultra-thin adjusters at the nape for a personalized fit



HAIR LENGTHS: Front: 2" | Crown: 3" | Sides: 2" | Back: 2 1/2" | Nape: 1 3/4" | Weight: 2 1/4 oz | Cap Size: Average Large
 AVAILABLE COLORS: Coming in 2018 M1S, M3S, M5S, M7S, M17S, M14S, M34S, M280S, M36S, M38S, M44S, M51S, M56S (shown in M34S)



Whether spiked or slicked, this short haircut is easy to wear and easy to style. The lace front was made specifically for HIM to create the ultimate hairline. Push up the front or lay it down to change it up.

S
T
Y
L
E

Any guy, any age,
can rock a style all his own.
SO SLICK IT BACK.
Pomp it up.
LEAVE IT UN-DONE.

HIM
BY HAIRUWEAR™



Model is wearing Edge shown in M12722S. See page 12.

KANEKALON EXCELLE

HEAT-FRIENDLY SYNTHETIC FIBER

C A R E I N S T R U C T I O N S & S T Y L I N G T I P S

Prewash

Gently remove tangles with fingers or a wide-tooth comb. Start at the ends and slowly work toward the roots to avoid damage. Do not brush.



Wash & Condition

Add a small amount of HairUWear *CLEANSE* Shampoo to a wash basin of cool water. Use shampoo sparingly.

Place product in washbasin and allow it to soak for 5 minutes. Do not scrunch or agitate the product.

Rinse by holding under running cool water until the water runs clear. Gently squeeze or use a clean, dry towel to press out excess water. Do not twist or wring.

Apply a light coat of HairUWear *RESTORE* Leave-in Conditioner & Heat Styling Protector avoiding the base and roots. Applying conditioner to the base may cause shedding.

Place wet wig on a folding HairUWear Wig Stand until it is completely dry. Finger styling is recommended.



Styling

Shake and style with your fingers to achieve the desired look. We recommend a HairUWear Styling Brush, HairUWear Styling Comb or fingers to style.

Apply a light mist of HairUWear *RESTORE* Leave-in Conditioner & Heat Styling Protector to difficult tangles if needed.

Heat-friendly synthetic fiber can be curled, blow dried or flat ironed to achieve a different hairstyle.

Heat-friendly synthetic fiber can withstand heat up to 350°F/180°C. We recommend a low-medium setting.

Style as desired:

To straighten, take a 1 inch section starting at the roots and run a flat iron to the ends.

To curl, wrap the hair around a curling iron and hold for 10 seconds. Carefully slide the iron out and pin the curl in place. Once the fiber has completely cooled it will keep the curl until heat is applied again.

If desired, use HairUWear Hair *CONTROL* Spray on the final styled product.



Tips & Tricks

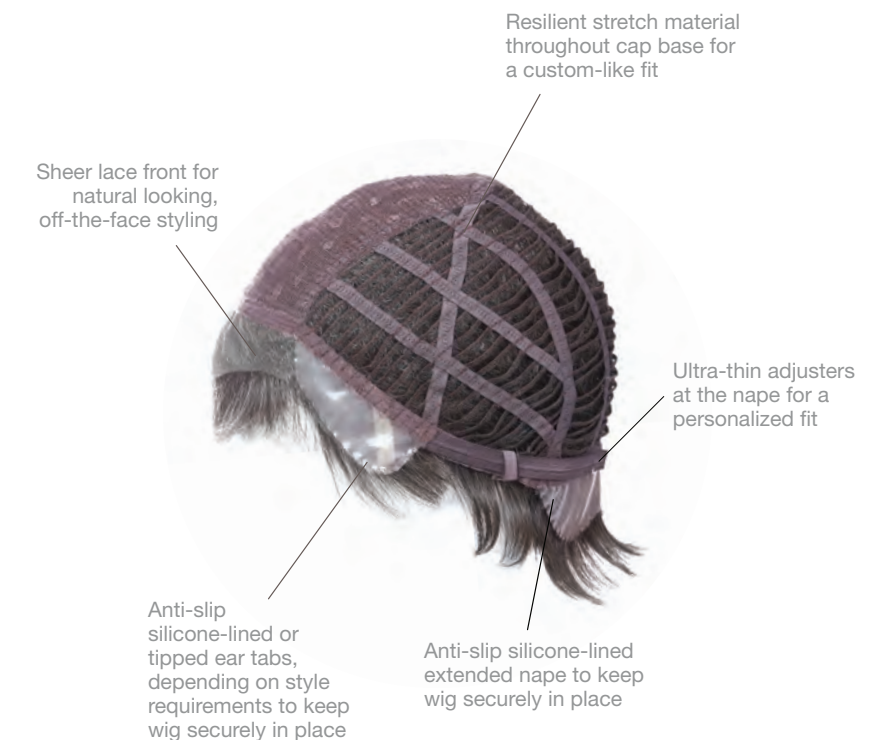
- Soaking longer than the recommended time will damage the product.
- Hot water will damage heat-friendly synthetic fiber.
- Sudden bursts of heat, such as opening an oven door, will damage heat-friendly synthetic fiber.
- Do not dry on a solid form or mannequin head to avoid stretching the cap.
- We do not recommend sleeping, showering or swimming during wear.
- Store the wig on a HairUWear Wig Stand.
- Lace is delicate and should not be tugged or pulled.
- After extended wear, matting and frizz can occur. To smooth, wash, condition and spray with HairUWear *RESTORE* Leave-in Conditioner & Heat Styling Protector, then blow dry with a HairUWear Styling Brush.
- Heat-friendly synthetic fiber can withstand heat up to 350°F/180°C. We recommend a low-medium setting. Fiber will be damaged if the heat setting is too high. We do not recommend curling or straightening the hair while wearing. Heat-friendly synthetic fiber will get very hot.
- Any cutting should be done by a professional hair stylist. No returns or exchanges will be allowed for worn or altered products.

Kanekalon®
EXCELLE
HEAT-FRIENDLY
SYNTHETIC HAIR

INTRODUCING THE CONFIDENT FIT CAP™

Offering the latest in unique, state-of-the-art wig construction, the Confident Fit Cap is the ultimate in light comfort and dependable fit. The wide stretch lace used in most of today's wigs is replaced with a thinner, more resilient stretch material that actually molds to the shape of the head for a lighter, more secure fit. The result is a cap that feels so natural and comfortable, you'll think it was custom made.

Natural, comfortable, undetectable.



Depending on the wig style's requirements, this cap is also available with various monofilament features and/or a 100% hand-knotted base.

HAIRUWEAR ACCESSORIES & TOOLS



STYLING COMB

Recommended for today's silhouettes, the HairUWear® styling comb will not damage fibers or generate static electricity. The wide plastic teeth are designed to provide the "finger styling" effect that is so popular among today's top celebrity stylists.



1 INCH STYLING BRUSH

The narrow design allows for brushing a few strands at a time for styling control and the "tail" can be used to tuck stray hair under the wig. Stainless steel, ball-tipped bristles are designed to comb through synthetic wig fiber without damage. Will not stretch or pull the fiber like regular hairbrushes.



WIRE BRUSH

Stainless steel, ball-tipped bristles are designed to comb through synthetic wig fiber without damage. Will not stretch or pull the fiber like regular hairbrushes. Lifts or smoothes fibers to make styling a breeze!



PIC-COMB

Designed for easy teasing or removing snarls, this comb won't split wig fibers. The long metal prongs are for lifting, fluffing, or smoothing.



MANNEQUIN HEAD

Mannequins provide the perfect display for any wig:

- 16-inches White Free-Standing Mannequin



WIG STAND

Perfect for drying, storage, or travel, this stand keeps a wig fresh and ready to wear. Made of sturdy, lightweight plastic, it snaps apart and lays flat for traveling ease. Allows air to circulate for quick drying.



HIM BY HAIRUWEAR™ COLOR RING

Take the guess out of choosing the correct color for your client with the HIM by HairUWear Color Ring.



HAIR CARE LINE

Cleanse shampoo
Restore leave-in conditioner,
Curl curl enhancing spray,
Shape medium-hold spritz, and
Control strong hold finishing spray.



ESSENTIAL CARE TRAVEL KIT

Includes 3.4 oz. bottles of *Cleanse*, *Restore*, and *Shape*. Meets TSA standards



STEAMER

For professional use only, this steamer is ideal for restyling synthetic and human hair wigs and hairpieces. Both easy to use and lightweight in design, this compact and portable steamer features a 4.7 oz. water reservoir for extended steaming time. 900 watts / AC 120V / ETL listed. Instructions included.



(A) CUTTING SHEARS



(B) TEXTURIZING SHEARS

SHEARS

These high-quality cutting and texturizing shears are ideal for customizing synthetic and human hair wigs and hairpieces without dulling your expensive shears. Use the cutting shears (A) to adjust the length or simply to frame your client's face. Use the texturizing shears (B) to reduce density or add volume to your client's wig. Purchase individually, or as a money-saving pair!



TAPE MEASURE

Convenient, easy-to-hold flexible tape measure to ensure the perfect fit for your client's wig. Double-sided tape includes inches and centimeters.

OPTIONAL ADHESIVES & TAPES

For added security or affixing to clean shaven areas



3M MEDICAL TAPE
Contoured Curved Front



RED LINER TAPE
Front Contour "B"



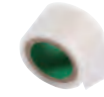
LACE FRONT TAPE
3mm (Transparent)



3M MEDICAL TAPE
Roll 3/4" x 108"

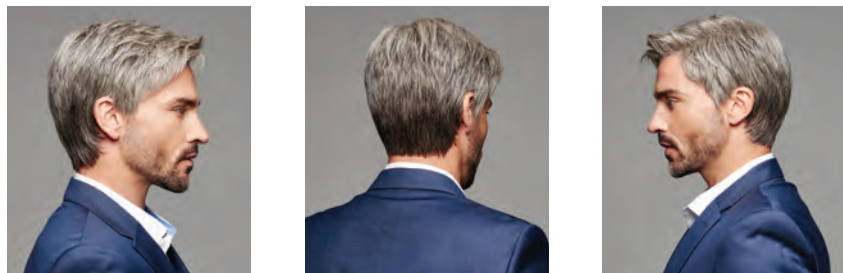


RED LINER TAPE
Roll 3/4" x 108"



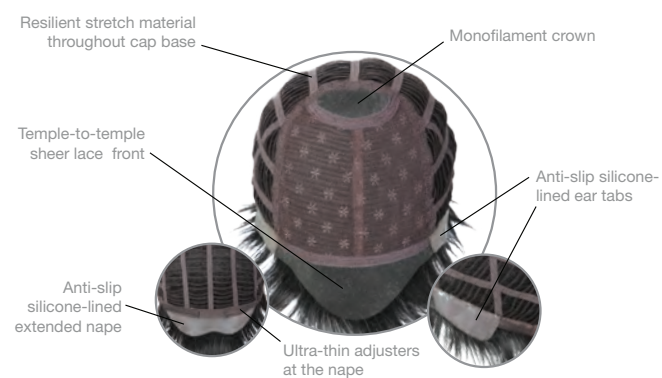
TRANSPORE
Roll 1" x 108"

NEW! R E S E R V E D

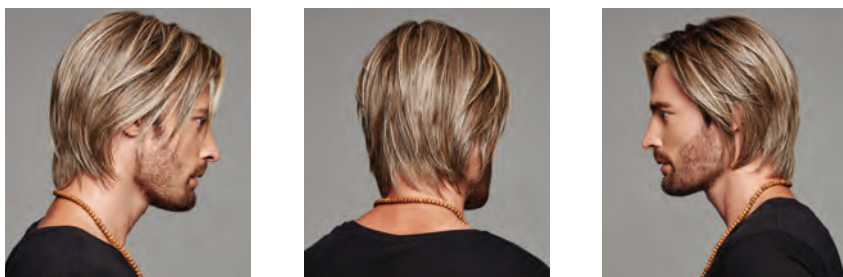


HAIR LENGTHS: Front: 2 ½" | Crown: 3 ¼" | Sides: 2 ¼" | Back: 2 ¾" | Nape: 2 ¼" | Weight: 2 ¼ oz | Cap Size: Average Large

AVAILABLE COLORS: NEW M1S, M3S, M5S, M7S, M17S, M14S, M34S, M280S, M36S, M38S, M44S, M51S, M56S (shown in M44S)

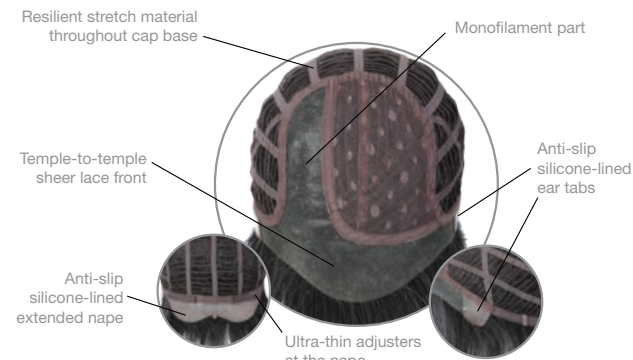


NEW! D A R I N G

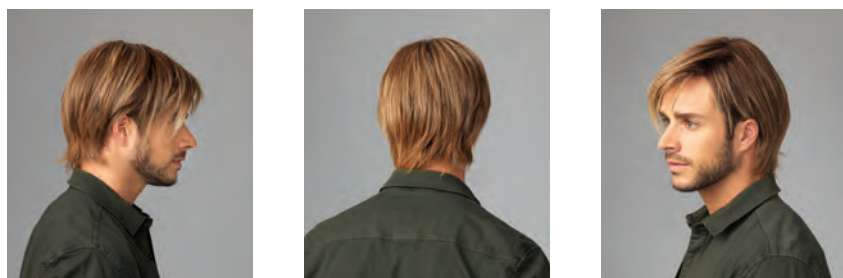


HAIR LENGTHS: Front: 6 ½" | Crown: 6 ½" | Sides: 5 ¼" | Back: 5 ¼" | Nape: 4" | Weight: 2 ¾ oz | Cap Size: Average Large

AVAILABLE COLORS: NEW M1S, M3S, M5S, M7S, M17S, M14S, M34S, M280S, M36S, M38S, M44S, M51S, M56S, Rooted Shade M12/22S (shown in M12/22S)



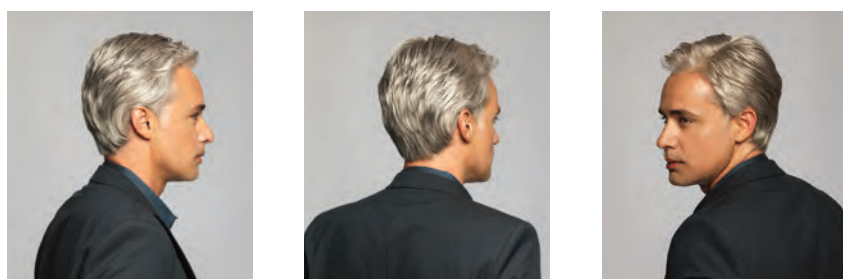
C H I S E L E D



HAIR LENGTHS: Front: 5 ¼" | Crown: 5 ¼" | Sides: 3" | Back: 5" | Nape: 3" | Weight: 2 ¼ oz | Cap Size: Average Large

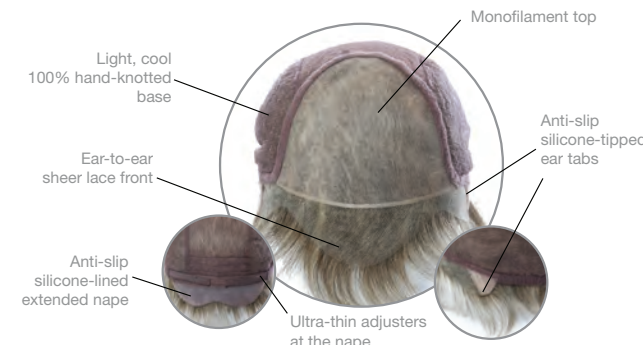
AVAILABLE COLORS: Coming in 2018 M1S, M3S, M5S, M7S, M17S, M14S, M34S, M280S, M36S, M38S, M44S, M51S, M56S, Rooted shade M12/22S (shown in M12/22S)

C L A S S I C



HAIR LENGTHS: Front: 3 ½" | Crown: 3 ¾" | Sides: 2 ¾" | Back: 3 ¼" | Nape: 2" | Weight: 1 ½ oz | Cap Size: Average Large

AVAILABLE COLORS: Coming in 2018 M1S, M3S, M5S, M7S, M17S, M14S, M34S, M280S, M36S, M38S, M44S, M51S, M56S (shown in M56S)

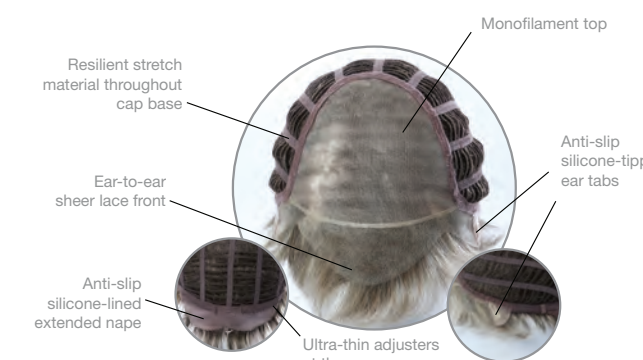


S O P H I S T I C A T I O N

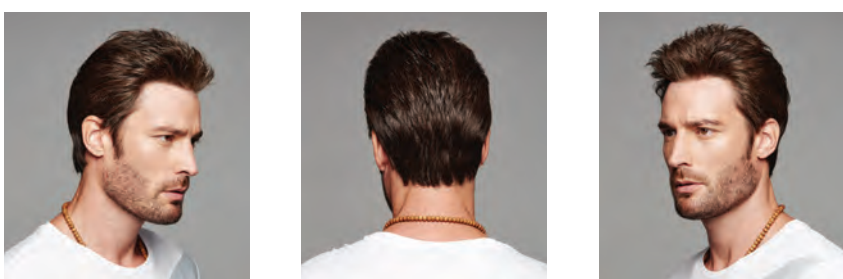


HAIR LENGTHS: Front: 2 ¼" | Crown: 2 ¾" | Sides: 1 ¾" | Back: 2 ¼" | Nape: 2 ¼" | Weight: 2 oz | Cap Size: Average Large

AVAILABLE COLORS: Coming in 2018 M1S, M3S, M5S, M7S, M17S, M14S, M34S, M280S, M36S, M38S, M44S, M51S, M56S (shown in M51S)

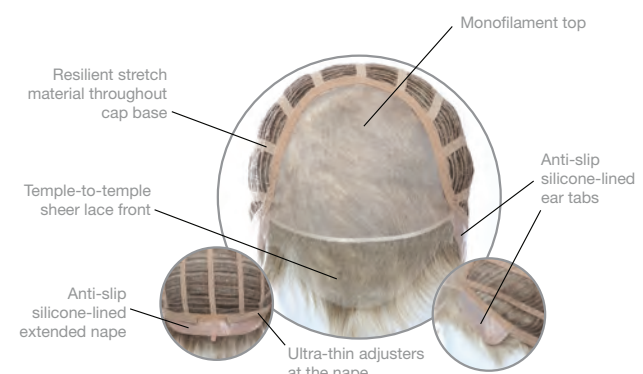


G R I T



HAIR LENGTHS: Front: 1 ¾" | Crown: 3 ¼" | Sides: 1 ¾" | Back: 2 ½" | Nape: 2 ¼" | Weight: 2oz | Cap Size: Average Large

AVAILABLE COLORS: Coming in 2018 M1S, M3S, M5S, M7S, M17S, M14S, M34S, M280S, M36S, M38S, M44S, M51S, M56S (shown in M7S)



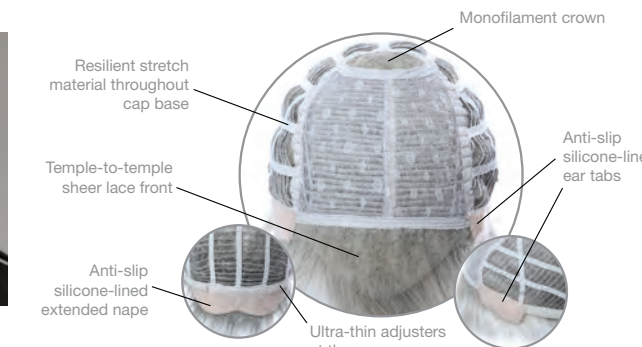
All HIM by HairUWear™ styles are made with HairUWear's exclusive Excelle fiber. This soft, natural-looking, 100% Synthetic fiber can be heat-styled to achieve just the look you want.

E D G E



HAIR LENGTHS: Front: 3 ½" | Crown: 4" | Sides: 1 ¾" | Back: 3" | Nape: 2 ½" | Weight: 2 ¼ | Cap Size: Average Large

AVAILABLE COLORS: Coming in 2018 M1S, M3S, M5S, M7S, M17S, M14S, M34S, M280S, M36S, M38S, M44S, M51S, M56S, Rooted shade M12/22S (shown in M17S)

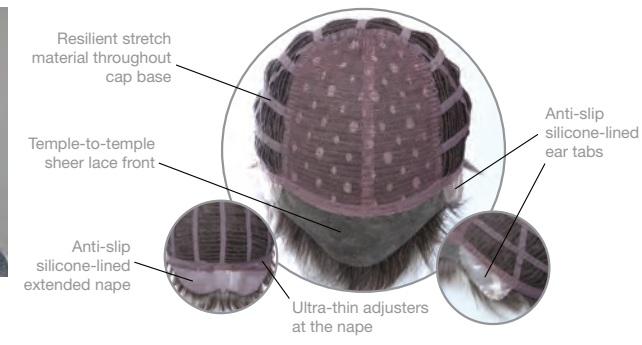


S T Y L E



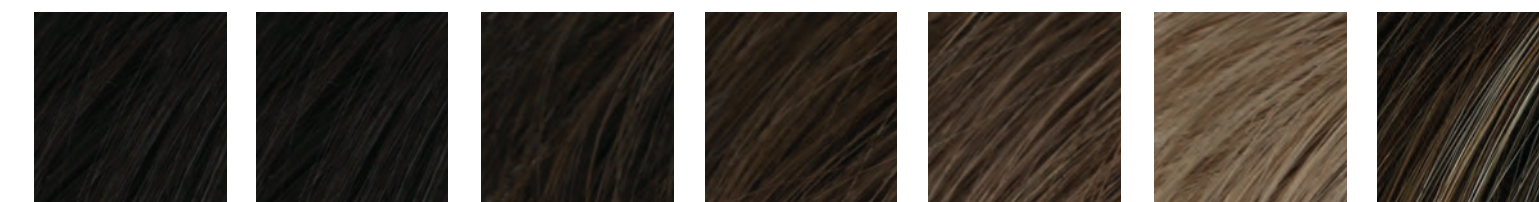
HAIR LENGTHS: Front: 2" | Crown: 3" | Sides: 2" | Back: 2 ½" | Nape: 1 ¾" | Weight: 2 ¼ oz | Cap Size: Average Large

AVAILABLE COLORS: Coming in 2018 M1S, M3S, M5S, M7S, M17S, M14S, M34S, M280S, M36S, M38S, M44S, M51S, M56S (shown in M34S)



*All styles shown do not come with sideburns

H I M B Y H A I R U W E A R C O L O R S



NEW! M1S
Black

M3S
Darkest Brown

M5S
Medium Brown

M7S
Ash Brown

M17S
Light Ash Brown

M14S
Dark Ash Blonde

M12/22S
Rooted shade
Dark Brown base,
medium/light
ash blonde highlights



M34S
10% grey/
medium brown

M280S
20% grey/
darkest brown

M36S
20% grey/
light ash brown

M38S
30% grey/
light ash blonde

M44S
50% grey/
darkest brown

M51S
50% grey/
light ash blonde

M56S
90% grey/
ash brown